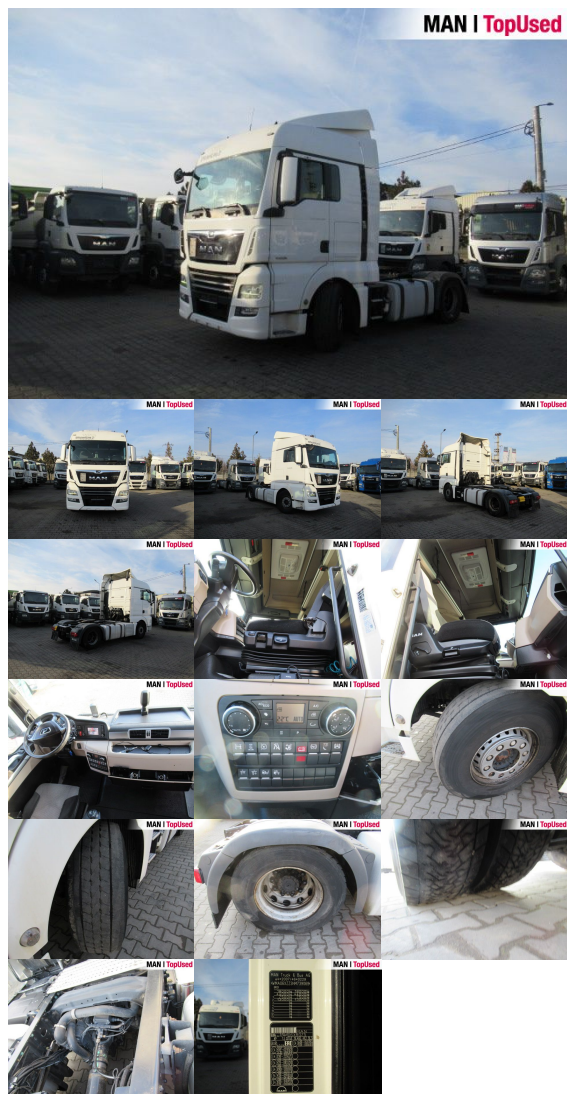


# MAN TGX 18.460 4X2 BLS

SH03821222



Price **13,990 EUR** (net)

**16,928 EUR** (gross)

Offer Date 02.09.2025

Body type	Tractor unit
1st reg.	03/2017
Power	338kW (460 HP)
Mileage	713599 km
Storage location	Otopeni - MHS Truck Service

## BASIC DATA

Brand	MAN
Model serie	TGX
Model variant	TGX TG2
Body type	Tractor unit (Standard)
Colours	white
Driver's cab	XLX
Berths	2 berths

## TECHNICAL DATA

Power	338 kW (460 HP)
Fuel	Diesel
Gearbox type	Automatic
Wheel drive	4x2
Suspension	Leaf air suspension
Axles	2 axles

## WEIGHTS AND MEASURES

GVW	18,000 kg
Rear overhang	800 mm
Wheel base	3600 mm
Fuel tank	AdBlue: 60 l Fuel tank: 580 l Fuel tank: 580 l
Emission category	Euro6

## EQUIPMENT

### Safety

- Antilock Braking System ABS
- Anti Slip Regulation ASR
- Electr. Stability Programm ESP
- Immobilizer
- Retarder
- Rear underrun
- Kerb mirror: right
- Heated wide angle mirror

### Interior

- Board computer
- Multifunctional steering wheel
- Aluminum inlays
- Digital tachograph
- Carpet floor covering
- Cooling box

### Exterior

- Self-levelling suspension
- Electr. and heated rear view mirrors
- Low noise
- Rear differential lock
- Fifth wheel
- 1x15 pin plug
- Cab Suspension
- Working lights
- Lifting roof (manual)
- Telematics system

### Assistance systems

### Comfort

- Adjustable steering column
- Electric window lift 2x
- Automatic climate control
- Driver's armrest
- Front seats adjustable in height
- Comfortable driver seat
- Additional heating
- Central locking with remote control
- Air-suspended driver seat
- Isolated driver's cab
- DC/AC converter

### Light and sight

- Fog lights
- Tinted glass
- Headlight range control
- Cornering light
- LED daytime running lights

### Audio & communication

- Radio
- Mobile phone preparation Bluetooth
- AUX & USB connector

- Efficientcruise
- MAN BrakeMatic
- Brake assist: Emergency Brake Assist 2
- Lane-Guard-System LGS
- Hill Hold Control HHC
- Speed limiter

### **Wheels and tyres**

- Spare wheel carrier

### **Equipment packages**

- Aero package
- Efficientline 3 package

### **Others**

- front springs parabolic 7.5 t, rear air suspension 13 t, hub reduction rear axle Hypoid HY-1350, hypoid axle ratio i 2.53, fuel filter heating, cab insulation NORDIC, wiring for tank truck to ADR, ADR Typ AT, equipment for dangerous goods to ADR, type OX, supply kit for semitrailer with lifting axle or moving-off aid, trailer socket 24V (15-pin), pick-up plate 40 mm